

# NAIN, Academic Integrity and Challenges for Professional Bodies

DR YVONNE KAVANAGH, DIRECTOR OF ENGINEERING  
RESEARCH SOUTH EAST TECHNOLOGICAL UNIVERSITY  
CARLOW

# Introduction

- Who is NAIN?
- What does NAIN do?
- How NAIN works
- Publications
- Generative Artificial Intelligence
- Academic Integrity and assessment security

# The Network - Background

- Who is NAIN
  - The [National Academic Integrity Network](#) (NAIN) is a national peer-driven network of staff members from Irish higher education institutions, student representatives, and higher education representative agencies
  - 100+ members in total representing:
    - 26 HEIs (all publicly funded HEIs + larger Private Colleges)
    - Students – individual SUs and Union of Students in Ireland
    - HEI Representative Organisations
    - Student Professional Support Groups – Librarians, Counsellors, etc
    - National Research Integrity Forum
    - QQI Executive members (QQI is the national agency responsible for qualifications in Ireland)

# Context for Establishment of the Network

- International:
  - Increased recognition of importance of Academic Integrity
  - Contract cheating
  - Prevalence of essay mills
  - Calls for legislative action
- Irish:
  - New legislation commenced in Ireland in November 2019: Section 43A provides a statutory basis for the prosecution of those who facilitate cheating by learners; who advertise cheating services and who publish advertisements for cheating services.  
QQI is responsible for bringing prosecutions under this Section of the Act.

Qualifications and Quality Assurance (Amendment) Act  
<http://www.irishstatutebook.ie/eli/2019/act/32/enacted/en/index.html>

# Aims of the Network

- To establish the **nature** of academic misconduct practised in Irish higher education institutions;
- To identify appropriate **measures** institutions can take to both prevent and address such misconduct;
- To inform dedicated **communications strategies** and **enhancement initiatives** developed in this area
- Inaugural meeting held on 14<sup>th</sup> November 2019

## Steering Committee

### Working Group 4

Terms of Reference agreed  
Work packages agreed with Group  
Meeting schedule agreed

Updates at each Plenary meeting

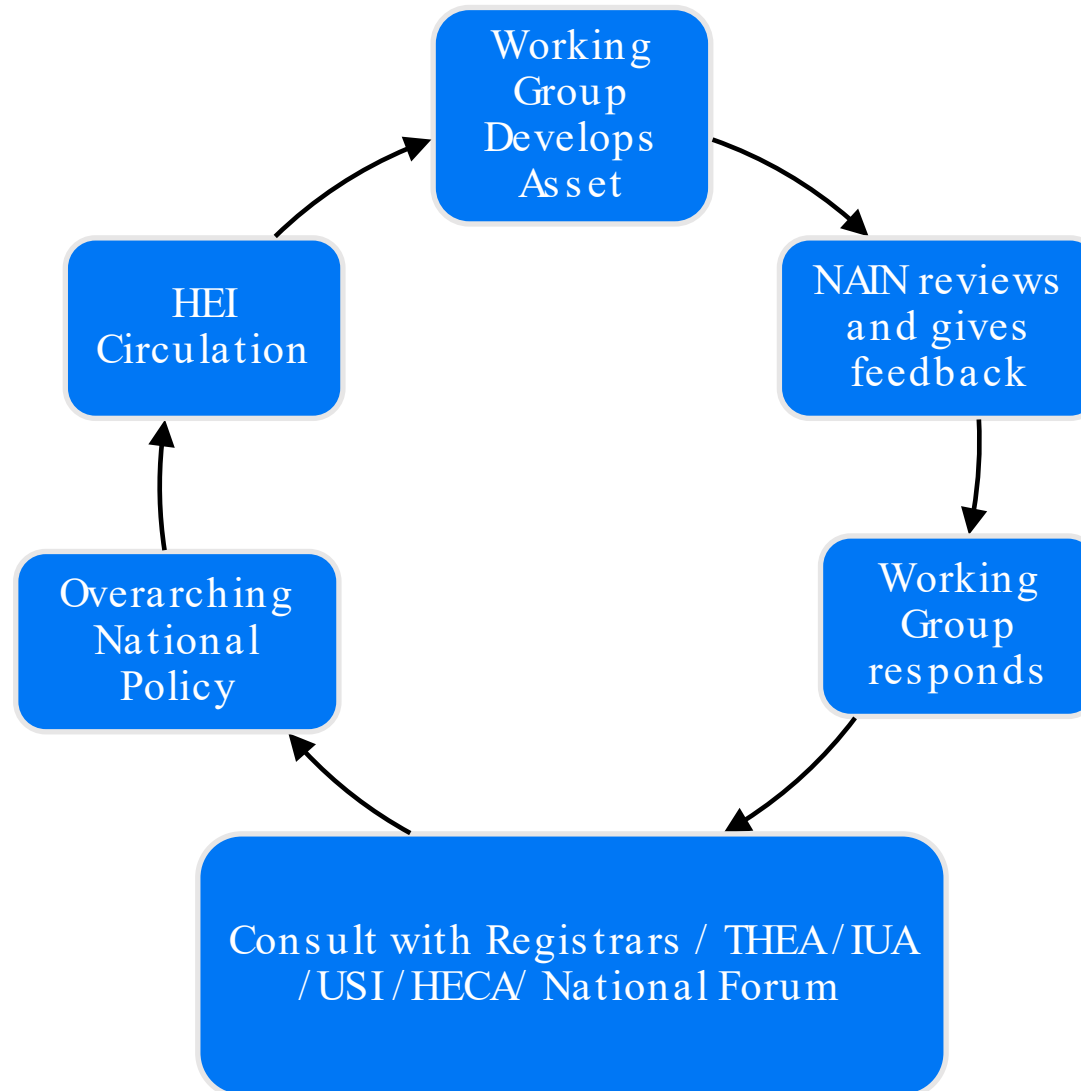
### Working Group 5

Terms of Reference agreed  
Work packages agreed with Group  
Meeting schedule agreed

Updates at each Plenary meeting

QQI

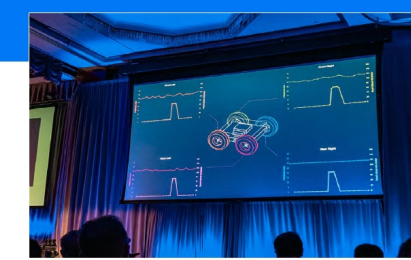
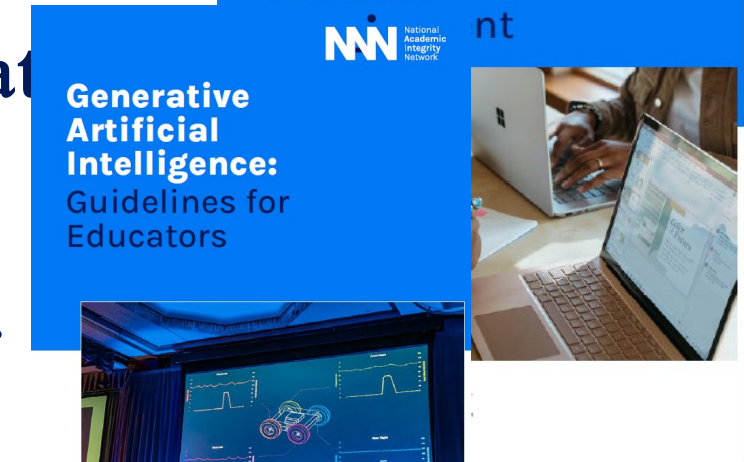
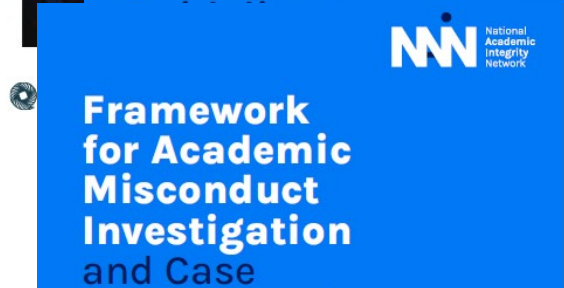
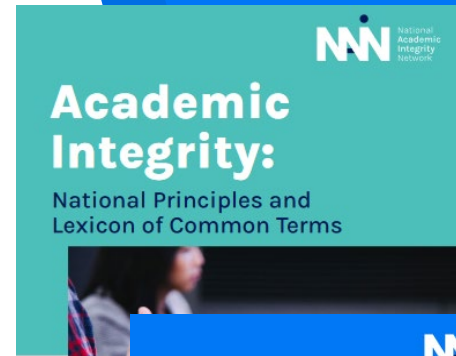
## Working Group model



# Academic Integrity Pillar

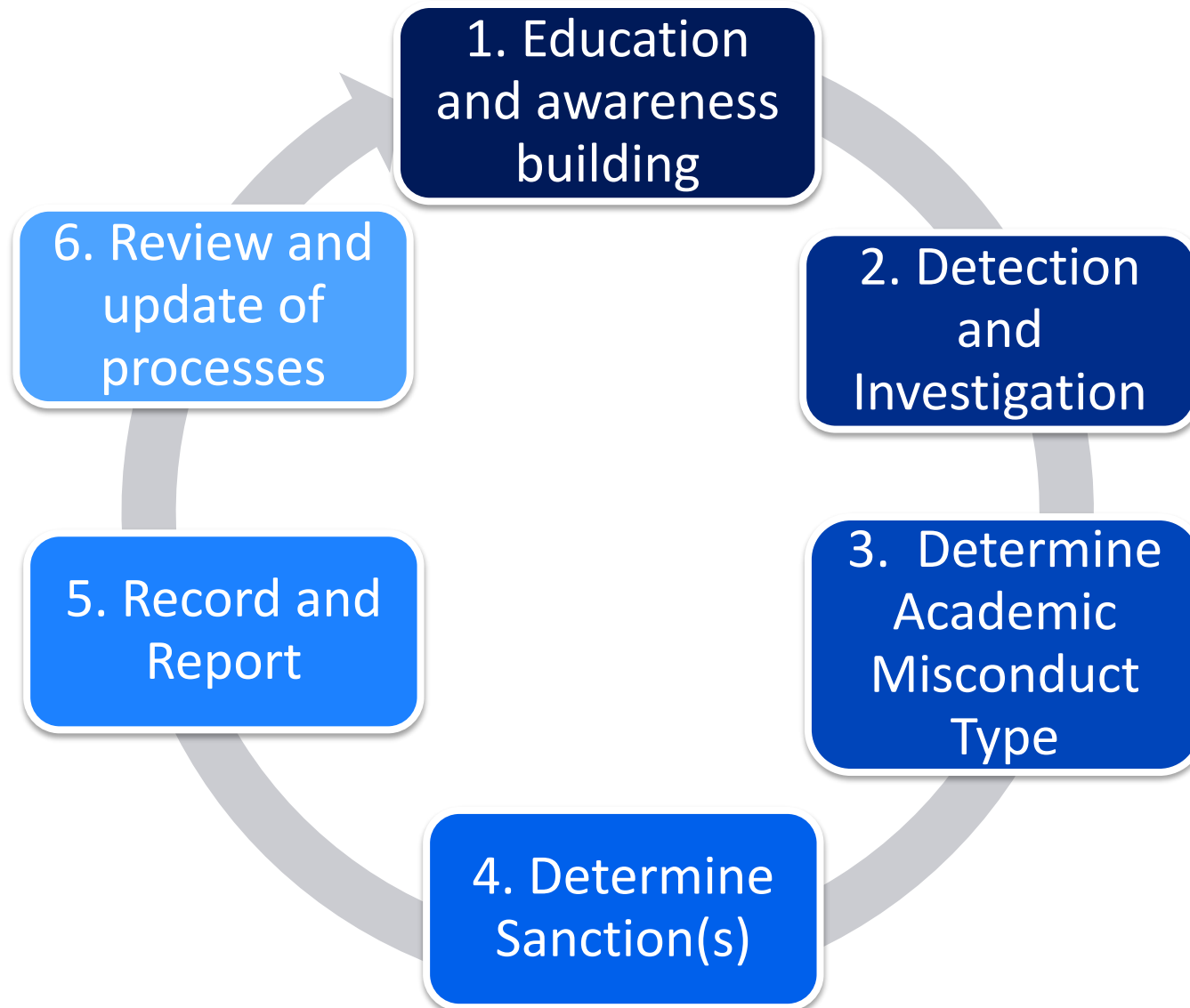
Aim of NAIN is to uphold Academic Integrity

- ❑ Academic integrity: Starting with a common language
- ❑ Guidelines underpinning a partnership approach to Academic Integrity
- ❑ Framework for Academic Misconduct Investigation & Case Management
- ❑ Generative artificial Intelligence-Guidelines for Educators





# Framework Overview



# Chief Commissioner outlines academic integrity risks in 2023

1 Feb 2023

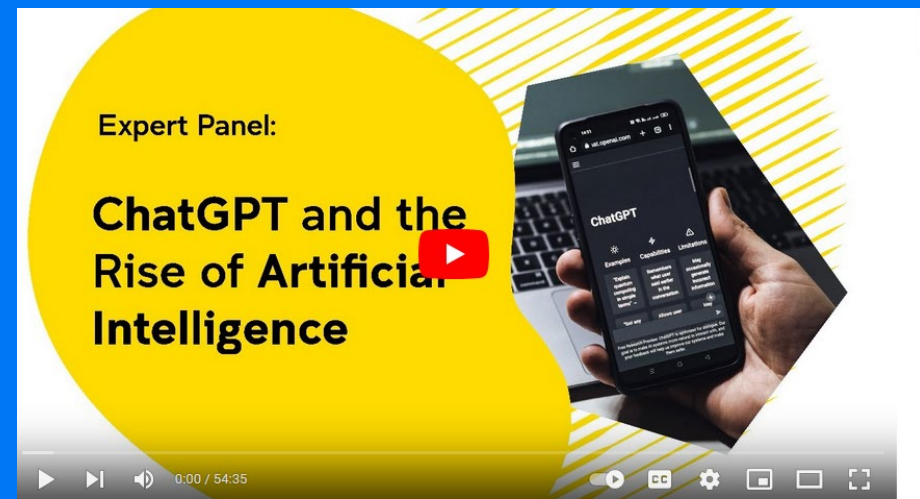
# AI, education and assessment: staff briefing

First of a series of briefings from the expert AI and education group with all the latest information and guidance in this fast-moving area. Published February 2023.

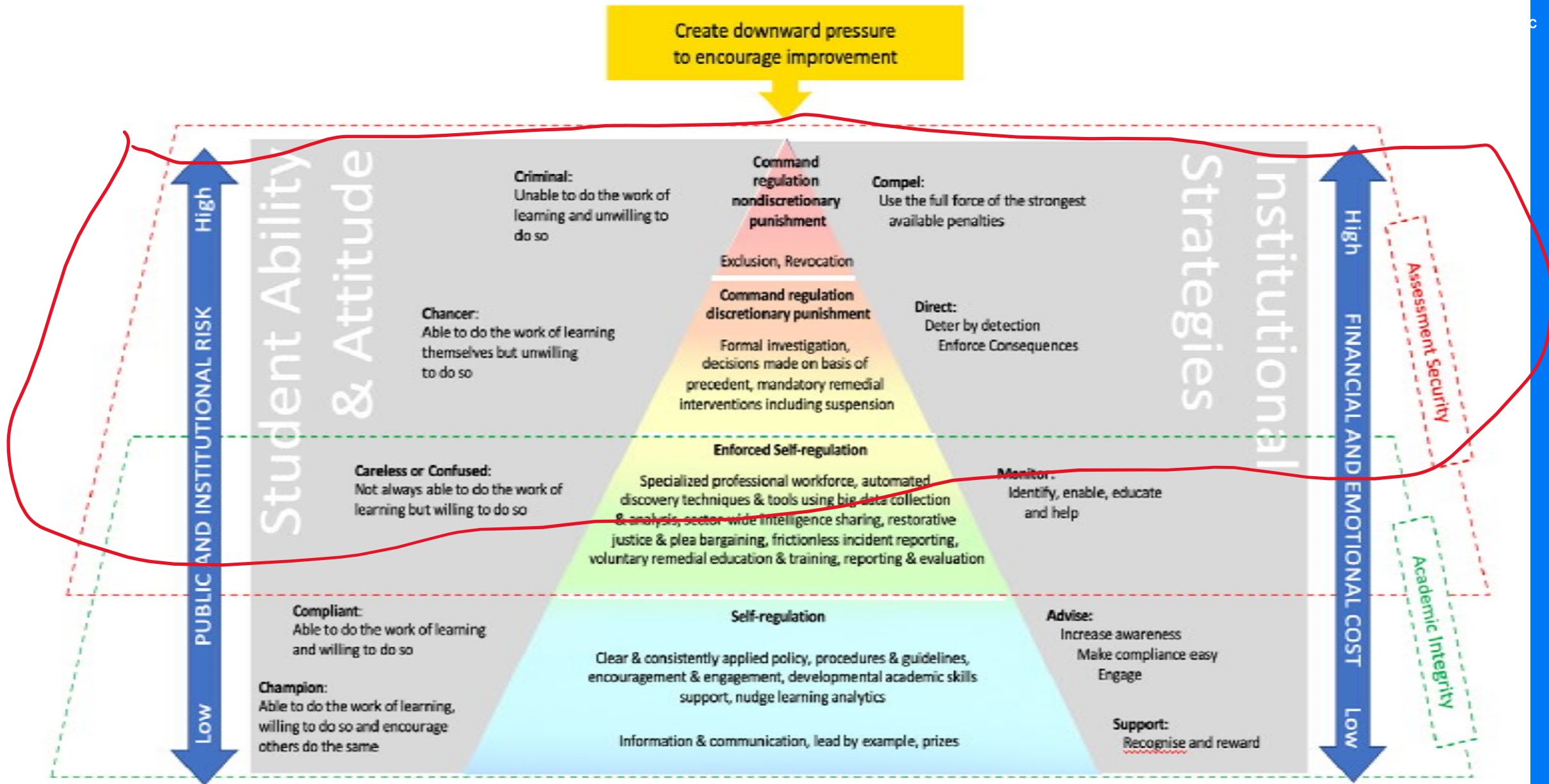


## THE RISE OF ARTIFICIAL INTELLIGENCE SOFTWARE AND POTENTIAL RISKS FOR ACADEMIC INTEGRITY: BRIEFING PAPER FOR HIGHER EDUCATION PROVIDERS

Publication date: 30 Jan 2023



ChatGPT and the Rise of Artificial Intelligence: Expert Panel



The Educational Integrity Enforcement Pyramid from The Educational Integrity

# Generative Artificial Intelligence – Need to know

- Can produce impressive outputs BUT
- Generative AI works on scraping information from everywhere
  - Is not always factual, is biased
  - Your input is used to train the model and your data is then owned by the tool
  - References can be made up
- Important to remember if submitted for assessment – the work is then the students
  - Does it reflect your opinion?.... Hitler was a saint....



# Generative Artificial Intelligence – Need to know - Students

- Education is about a process which develops critical evaluation and synthesis skills and assessment is a demonstration of those discipline specific knowledge, competencies and skills.
- How Generative AI works – It only manipulates data
- Again –submitted work is your work
  - Does it reflect your opinion?.... *‘Hitler was a saint....’*

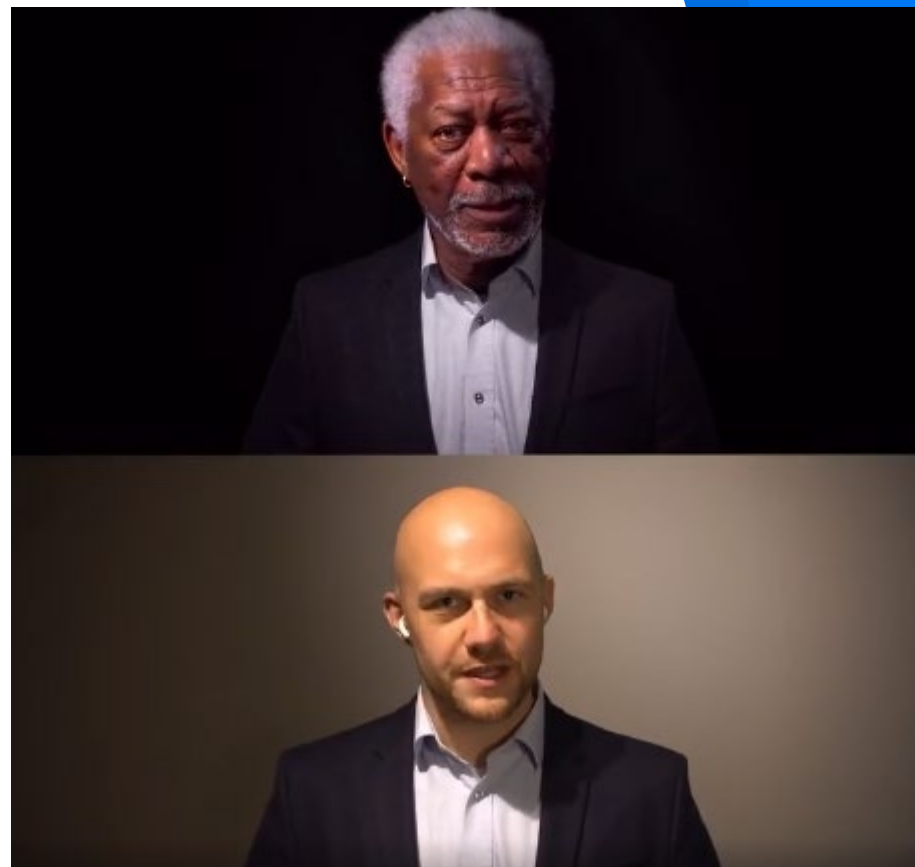


# Large Language Models vs small Language Models

- Large Language Models – Open AI, BARD etc.
  - Data is NOT Protected and IS shared globally
  - GDPR considerations
  - Open source bithub language
  - NO protection of sources, copyright patent etc
- Small language Models
  - Can be localized
  - Can have a restricted access
  - Can be specific purpose
  - Lockdown browsers

# Synthetic Reality

- Ethical considerations
  - Do you see me?
  - Who am I?
  - Who owns my image?



Is the person on camera really themselves

# Assessments and Generative AI

- AI tools can be very useful in some circumstances
- Training in Prompt Engineering important
- Detection of use of AI -example: Turnitin
- Accuracy of AI – research suggests that AI as a correction tool is not as efficient as human marking
- Need to evaluate the risk for every application



# Thank you

- Questions

